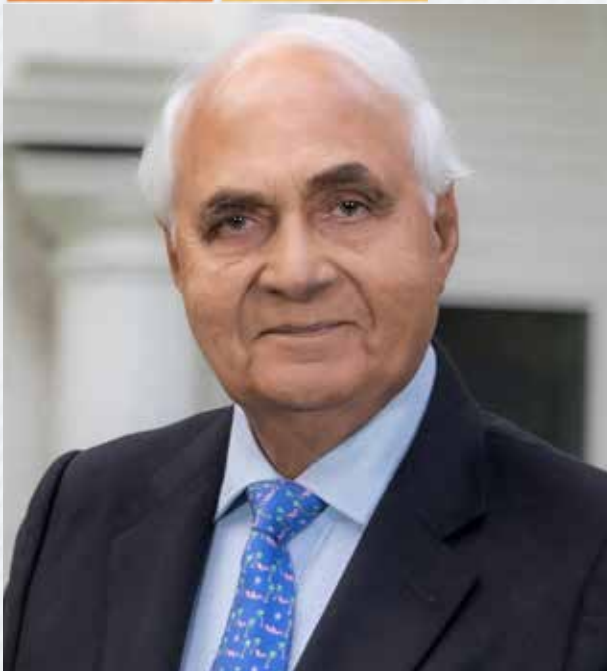




KUTUMB



*Enabling access to Quality Education, Parental Engagement,
Student Empowerment, Teacher Development*



LEADERSHIP SPEAKS

"Life is a myriad of impressions, sometimes unwittingly throwing us into a little space which, through its very gloom, can shine on us a true intent and goal. I saw mine when my late wife, Indira, suffered an accident. As I prayed and pleaded for her to recover, we both bonded even more and recognized a joint goal, of helping those who were less privileged and who needed support that they could not afford. That is how 'DLF CARES' came into being.

As part of the School Education Support Programme, it was launched in the year 2011 with the belief that every child must have access to quality education, endowed with life skills, and groomed to become job-ready. I believed that each student should be taken care of in all respects, and not just provided with financial support.

It was a good fit, firmly in the true genetic making of our organization. We went to schools, attended Parent-Teacher meetings, and tried our best to understand the psyche of those undergoing and facing any kind of trouble. It taught us a lot of things— compassion, patience, the understanding of pain, and basic humanity. We learnt that a lot of people needed help. We started with our own employees.

As parents, Indira and I knew that the role of caring extended beyond our own and the yore. In some places, we saw promise. In others, we met hurdles. Together, we dealt with all of them with affirmation. Over the years, we managed to create scholarships, healthcare facilities, reached out to our very own, and became bigger in our own esteem, thanks to their love and affection.

Our larger family now boasts of promising career paths, happy people, and an intrinsic belief of continued success. Clearly, true hope and effort have no boundaries or limitations."

~ Dr. Kushal Pal Singh, Chairman Emeritus, DLF

DLF CARES

An Education Support Programme

DLF Foundation is committed to driving excellence along with inclusivity in education. With this intent, our programme was established in the year 2011. Based on the premise that every child has the right to education, the primary objective has been to nurture children to enable them to learn and acquire skills to step into the future, transforming students into responsible citizens.

Since its inception, this programme has made a meaningful difference in the lives of children by giving them access to quality education through financial support. Scholarships are awarded to underprivileged students from Class I to Class XII in recognized state and central schools across India.

Our team works tirelessly towards providing academic support by combining social-emotional learning, mentoring, counseling, and remedial assistance to students and their families.

The entire programme is technologically enabled, which helps our beneficiaries to be digitally aware, along with embedding all aspects of documentation, training, and learning.



PROGRAMME OBJECTIVES

ENROL

Educate, nurture, and mentor children for holistic development

ENABLE

Academic excellence, abilities, skills, and competencies

EMPOWER

Social and emotional development

A HOLISTIC APPROACH



Access to Education

The programme educates, empowers, and supports meritorious and underprivileged children through sponsorships in quality schools. Its foundational framework is equitable, inclusive, and holistic, enabling every child to be equipped with knowledge, competencies, and values, helping them to step into the 21st century.



Beyond School Programme

This scholarship has aided thousands of students in higher education through financial support to pursue full-time undergraduate studies and professional courses.



Mental Health & Wellbeing

We prioritize mental health issues, offering individual and group sessions addressing poverty, domestic violence, peer pressure, adolescent changes, technology addiction, substance abuse, sibling rivalry, sexual harassment, and others. Over the years, many workshops, interactive sessions, and counseling programmes have been organized to benefit our scholars.





National Education Policy

All learning is dovetailed within the NEP framework, which consists of vocational learning, career guidance, indigenous practices, value education, global citizenship, and digitalization.



Capacity Building of Teachers

Over the years, innumerable educators have been trained through our in-service programmes to improve their level of innovation, pedagogical approaches, student assessments, mentoring, and counseling, along with digital awareness.



Parental Engagement

We empower first-generation learners with quality education, which acts as a catalyst for positive change within their families and society at large.



Contribution to UN SDGs

The programme is designed with the UN Sustainable Development Goals at the centre. A commitment towards poverty alleviation, gender sensitivity, livelihood, and equitable education is our core focus.



PARTNER VOICES



"The Australian Council for Educational Research (India) is delighted to partner with the DLF Foundation to support improvements in the learning of the beneficiaries of the DLF CARES Scholarship Support Programme. ACER measured the academic outcomes and wellbeing of students with the International Benchmark Tests (IBT) and Social-Emotional Wellbeing (SEW) Survey to collect baseline and endline data. We have also worked with a team of counsellors and teachers from the programme to support the effective use of assessment data for informing teaching and learning processes. The assessment data and insights from the reports shared with the DLF Foundation are helping to undertake evidence-informed decisions for future interventions to support improvement in student learning." ~ Mr. Varun Jain (Director, Sales & Marketing) - ACER India



"We are thrilled to announce our partnership with the DLF CARES programme. Through this collaboration, we aim to impact students in grades IX-XII across partner and non-partner schools. our focus will be on enhancing mental health literacy, fostering resilience, and promoting socio-emotional learning. We are confident that this programme will bring about a transformative change in the lives of the scholars." ~ Dr. Aakanksha Bhatia, Founder - MannRaahi



"Lotus Petal Foundation has partnered with DLF foundation to transform the lives of students through the Vidya Sahyog Programme. We will provide Math and English classes to students with learning gaps. This programme will be conducted after school hours through live interactive online classes. Counselling sessions are also planned to enhance life skills. The Vidya Sahyog team is thrilled to collaborate with the DLF Foundation team in making a positive impact on the young lives."

~ Ms. Ankita Hazra, Sr. Programme Manager - Vidya Sahyog, Lotus Petal Foundation



"We consider it a tremendous privilege to collaborate with the DLF Foundation. We offer career, college, and scholarship guidance to DLF CARES scholarships recipients, actively working with students and parents to tailor transition plans aligned with their aspirations for higher education or vocational training. We will continue to add greater value as we empower their lives." ~Mr. Ankit Bansal, Programme Lead, CSR - iDreamCareer.com

OUR PARTNER SCHOOLS

A decade of learning with quality institutions

Showcasing educational alliances with few of our partner schools



KLK Saraswati Bal Mandir



RBSM Public School



Shishu Kalyan Sr. Sec. School



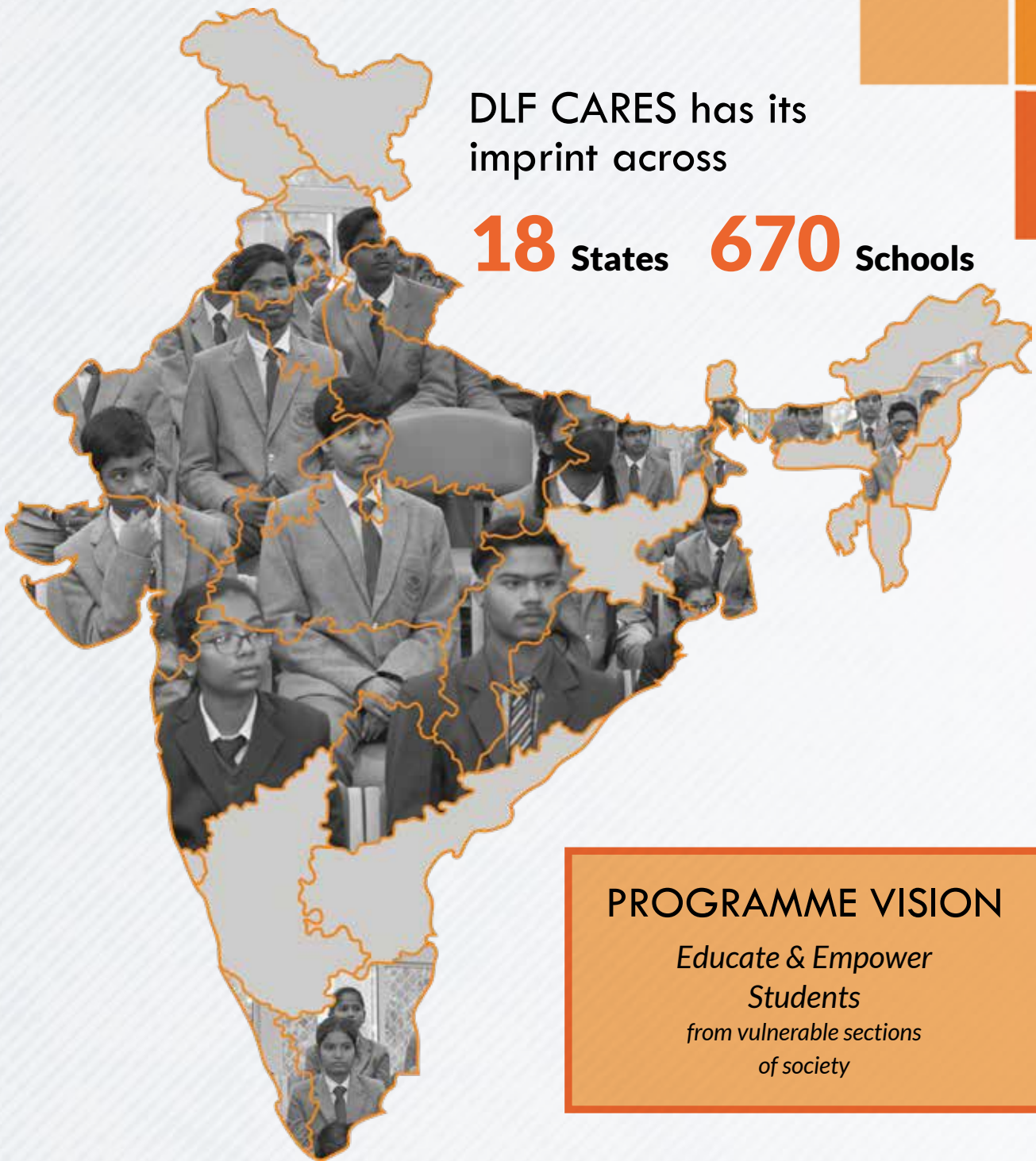
The Pine Crest School



OUR PRESENCE

DLF CARES has its
imprint across

18 States **670** Schools



PROGRAMME VISION

*Educate & Empower
Students
from vulnerable sections
of society*



4th Floor, Gateway Tower,
DLF Cyber City Phase III,
Gurugram, Haryana - 122002, India



dlfcares@dlf.in



PROGRAMME MANAGER

+91-8929731373

+91-8929731372

The contents in this newsletter is privileged meant only for the information of the intended recipients and may not be used, published or redistributed without the prior written consent of DLF Foundation including its partners("Trust"). Although an endeavour has been made to provide correct and quality information, recipients are advised to exercise their diligence/discretion in relying on the information so provided. Trust including its trustees, associates, employees and agents assume no liability or responsibility, including any loss and damage arising due to use of the contents and information contained herein by any party whosoever.